



All loading and design criteria supplied by customer is assumed accurate. Only the stated Design Assumptions were considered, and must be verified by the responsible Engineer of Record (EOR). The basis of Hilti component and connection design is the published data in the current Hilti Technical Guide, including material and cross-section properties, allowable load values, factors of safety, methods of calculation, and limiting factors. The EOR must verify suitability for any specific application, and the capacity of the supportive structure to receive the shown configuration and associated reaction loads. Modification to components and/or design may alter performance and must be evaluated by the EOR.

PROJECT NAME:

PLATFORM

SERVICE REQUEST DESCRIPTION:

BRACED CANTILEVER

DESIGNED BY:

MES

REVIEWED BY:

VAM

DRAWN BY:

HAM

ISSUE DATE:

26 FEB 15

REVISIONS:

NO:	DESCRIPTION:	DATE:
A	ORIGINAL ISSUE	26 FEB 15

SERVICE REQUEST NUMBER:

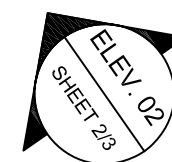
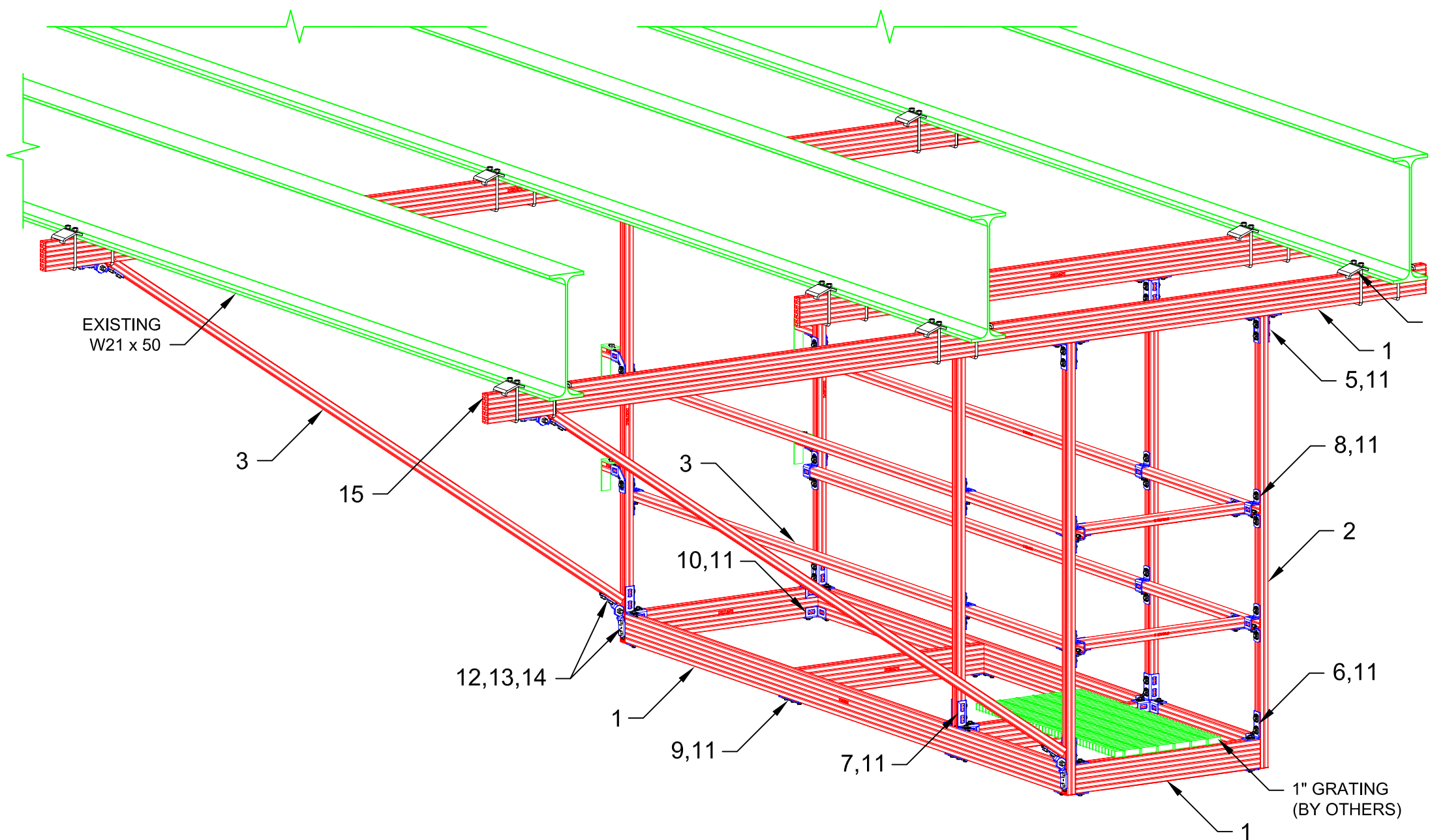
PL-BC50-5

DRAWING NUMBER:

01

SHEET:

1/3



01 ISOMETRIC
N.T.S.

No.	Unit Qty	Unit	Description	Box Qty	# Boxes Needed	Item No.
1	AS REQ'D	EA	STRUT HS-2716-12/PG 20' B2B SLOT 11/16"	1	AS REQ'D	2007084
2	AS REQ'D	EA	STRUT HS-1316-12/PG 10' B2B	1	AS REQ'D	2007081
3	AS REQ'D	EA	STRUT HS-158-12/PGS 20' SOLID	1	AS REQ'D	407562
4	18	EA	SBC 4-7/8" STRUT BEAM CLAMP (SPECIALS)	VARIES	VARIES	3458704
5	6	EA	CHANNEL TIE MQV-2/2 D	10	1	369638
6	4	EA	CHANNEL TIE MQV-3/3 D	10	1	369641
7	2	EA	CHANNEL TIE MQV-4/3 D	10	1	369642
8	12	EA	CLAMP MQB-41	10	2	369668
9	4	EA	CHANNEL TIE MQV-T	10	1	369645
10	12	EA	4-HOLE ANGLE MQW-4	10	2	369658
11	146	EA	CHANNEL CONNECTOR MQN	50	3	369623
12	8	EA	SEISMIC HINGE, BASE/HANGER HALF, 1/2"	10	1	333308
13	16	EA	WING NUT MQM-F1/2"	50	1	377883
14	16	EA	HEX HEAD BOLT 1/2" x 1-1/4"	50	1	411767
15	44	EA	CHANNEL END CAP MEK RED	50	1	244886

NOTE(S):

1. PRELIMINARY, NOT FOR CONSTRUCTION
2. DESIGN ASSUMPTIONS:
 - a. NO LOADS CONSIDERED - CONCEPT ONLY
 - b. LATERAL LOADS NOT CONSIDERED
 - c. BUILDING CODE: NOT SPECIFIED
 - d. CORROSION RESISTANCE REQ'D.: NOT SPECIFIED
2. REFER TO COMPONENT MANUFACTURER'S IFUs FOR REQUIRED INSTALLATION INFO.
3. E.O.R. MUST BE NOTIFIED OF ANY DEVIATIONS FROM EXISTING/ NEW SUBSTRATE CONDITIONS SHOWN HEREIN TO VALIDATE ACCEPTANCE OF THIS HILTI DESIGN PRIOR TO INSTALLATION.



All loading and design criteria supplied by customer is assumed accurate. Only the stated Design Assumptions were considered, and must be verified by the responsible Engineer of Record (EOR). The basis of Hilti component and connection design is the published data in the current Hilti Technical Guide, including material and cross-section properties, allowable load values, factors of safety, methods of calculation, and limiting factors. The EOR must verify suitability for any specific application, and the capacity of the supportive structure to receive the shown configuration and associated reaction loads. Modification to components and/or design may alter performance and must be evaluated by the EOR.

PROJECT NAME:
PLATFORM

SERVICE REQUEST DESCRIPTION:
BRACED CANTILEVER

DESIGNED BY: MES	REVIEWED BY: VAM
---------------------	---------------------

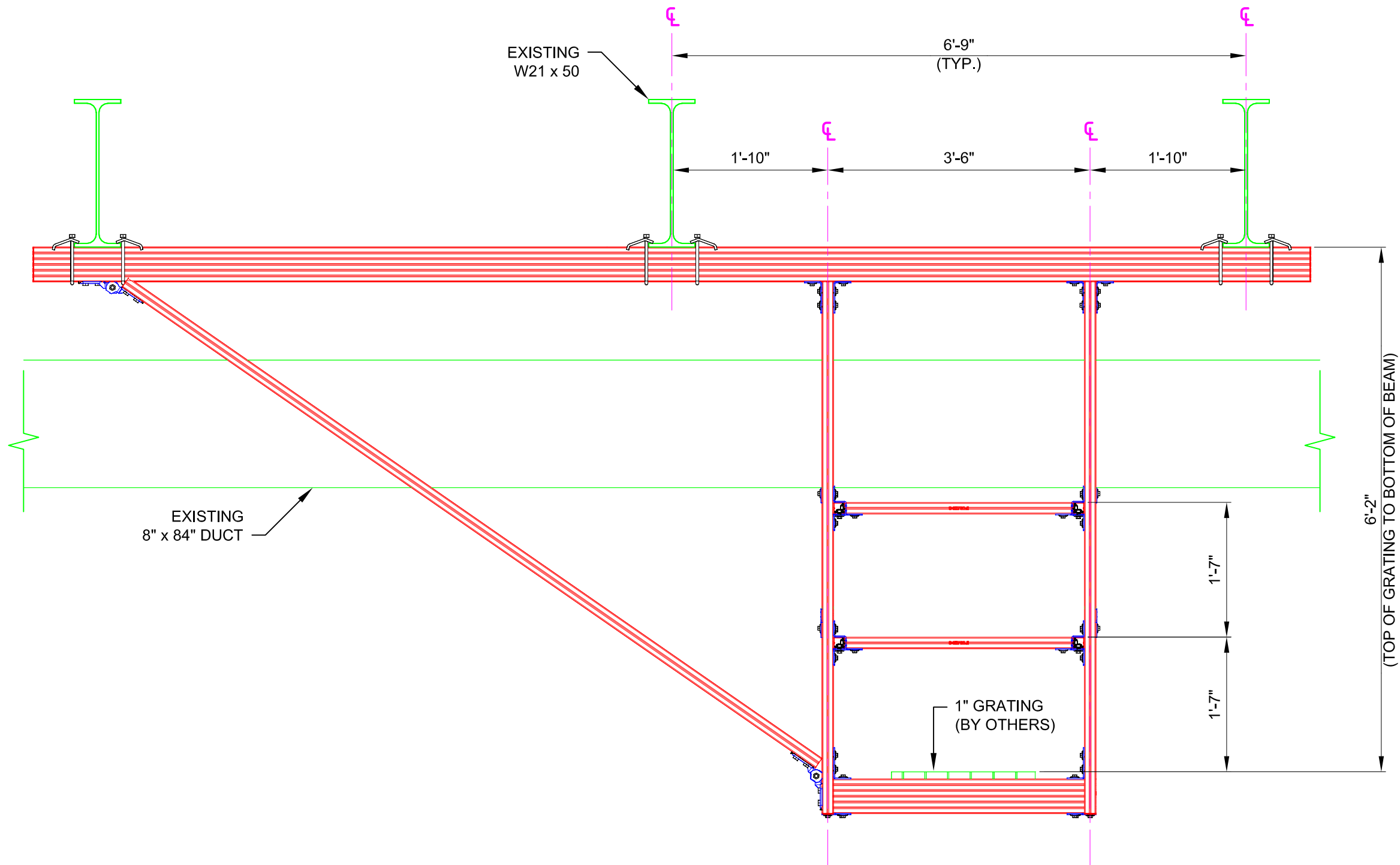
DRAWN BY: HAM	ISSUE DATE: 26 FEB 15
------------------	--------------------------

REVISIONS:

NO.	DESCRIPTION:	DATE:
A	ORIGINAL ISSUE	26 FEB 15

SERVICE REQUEST NUMBER:
PL-BC50-5

DRAWING NUMBER: 01	SHEET: 2/3
------------------------------	----------------------



02 ELEVATION
N.T.S.

NOTE(S):
1. REFER TO SHEET 1 FOR APPLICABLE NOTE(S).



All loading and design criteria supplied by customer is assumed accurate. Only the stated Design Assumptions were considered, and must be verified by the responsible Engineer of Record (EOR). The basis of Hilti component and connection design is the published data in the current Hilti Technical Guide, including material and cross-section properties, allowable load values, factors of safety, methods of calculation, and limiting factors. The EOR must verify suitability for any specific application, and the capacity of the supportive structure to receive the shown configuration and associated reaction loads. Modification to components and/or design may alter performance and must be evaluated by the EOR.

PROJECT NAME:
PLATFORM

SERVICE REQUEST DESCRIPTION:
BRACED CANTILEVER

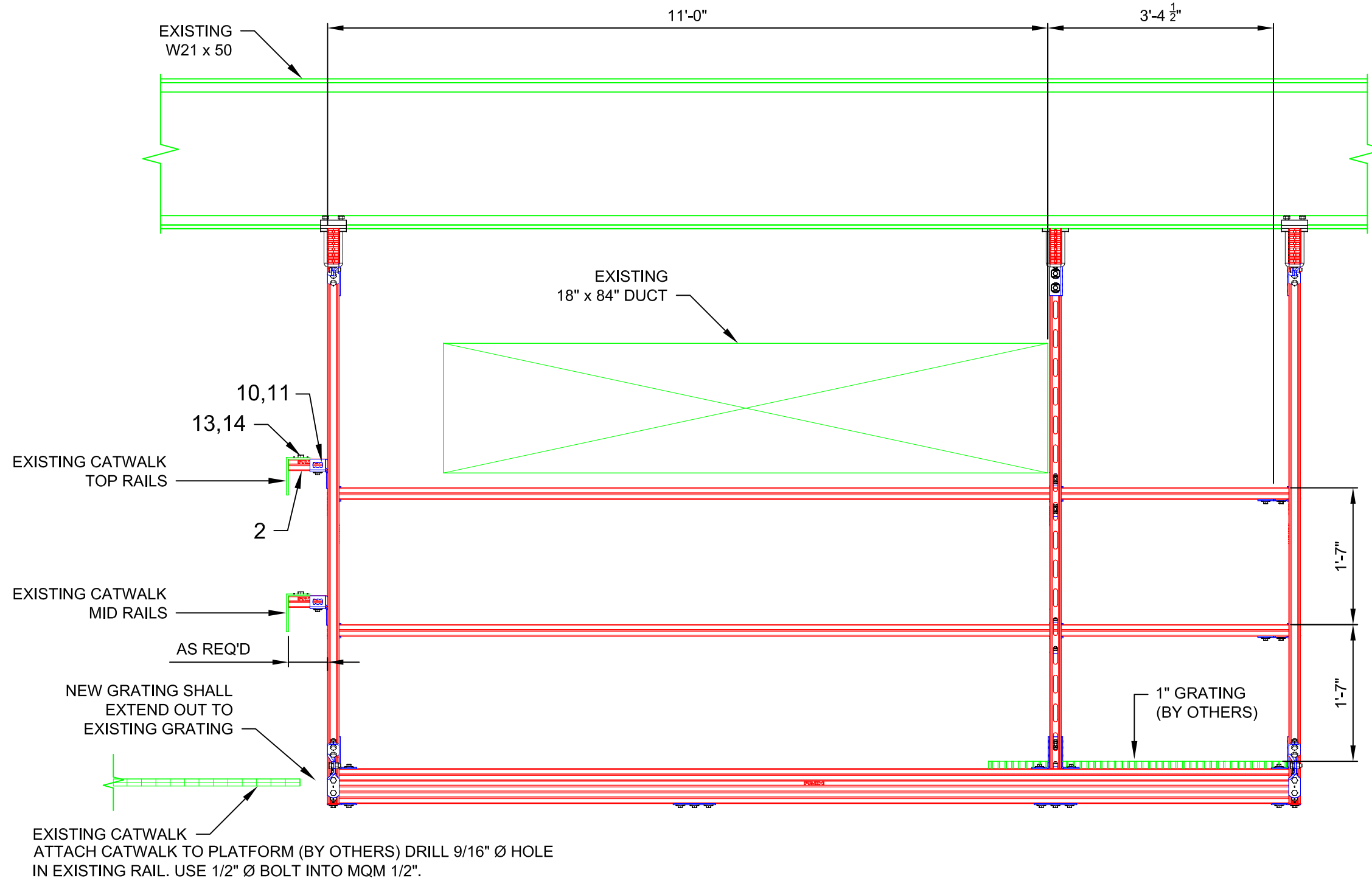
DESIGNED BY: MES	REVIEWED BY: VAM
---------------------	---------------------

DRAWN BY: HAM	ISSUE DATE: 26 FEB 15
------------------	--------------------------

REVISIONS:		
NO.	DESCRIPTION:	DATE:
A	ORIGINAL ISSUE	26 FEB 15

SERVICE REQUEST NUMBER:
PL-BC50-5

DRAWING NUMBER: 01	SHEET: 3/3
------------------------------	----------------------



03 ELEVATION
N.T.S.

NOTE(S):
1. REFER TO SHEET 1 FOR APPLICABLE NOTE(S).